



Shaw Court, Ninehams Road, Caterham, CR3 5LG

Asking price £270,000

*Mc.* MONOCHROME | HOMES

# PROPERTY SUMMARY

## OVERVIEW

\*WE PAY TOWARDS YOUR LEGAL FEES\* Monochrome Homes bring to the market this two double bedroom top floor apartment offering parking, garage and communal gardens.

### Accommodation

The property offers spacious accommodation comprising of a living/dining room with a sepearte kitchen. The hallway lead to a generously sized master bedroom with fully fitted wardrobes and further double bedroom.. You will be delighted to witness a sizeable family bathroom which comes complete with jacuzzi bathtub and seperate shower unit combined. Outside the apartment offers parking and visitor spaces with a nicely landscaped communal courtyard and a garage en bloc.

### Location

The property is walking distance to Caterham Valley, and amenities such as high street shops, library, restaurants and pubs. Caterham offers a comprehensive range and selection of shops including two supermarkets and mainline train station. The area is close to open countryside whilst the motorway network can be accessed via junction 6 off the M25 at Godstone. The Surrey National golf club is also within a short distance of the property. Direct train services to London Bridge and Victoria are from Caterham (1.4 miles) and additionally both Upper Warlingham and Whyteleafe stations are a short distance away. The A22 offers easy access back into London while the M25/M23 provide fantastic commuting links to Gatwick and the South East.

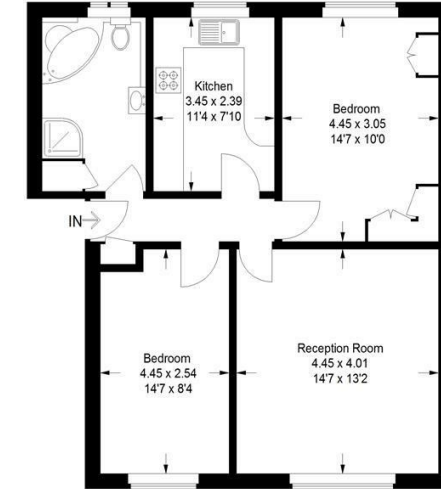
### Disclaimer

"These details are prepared as a general guide only, and should not be relied upon as a basis to enter into a legal contract, or to commit expenditure. An interested party should consult their own surveyor, solicitor or other professionals before committing themselves to any expenditure or other legal commitments.

If any interested party wishes to rely upon any information from the agent, then a request should be made and specific written confirmation can be provided. The Agent will not be responsible for any verbal statement made by any member of staff, as only a specific written confirmation should be relied upon. The Agent will not be responsible for any loss other than when specific written confirmation has been requested."

## Ninehams Road, CR3

Approximate Gross Internal Area  
64.0 sq m / 689 sq ft



This plan is for layout guidance only. Not drawn to scale unless stated. Windows and door openings are approximate. Whilst every care is taken in the preparation of this plan, please check all dimensions, shapes and compass bearings before making any decisions reliant upon them. (ID985776)



Energy Efficiency Rating		Environmental Impact (CO <sub>2</sub> ) Rating	
	Current	Potential	
Very energy efficient - lower running costs			
(92 plus) A			
(81-91) B			
(69-80) C			
(55-68) D			
(39-54) E			
(21-38) F			
(1-20) G			
Not energy efficient - higher running costs			
		62	
	41		
Very environmentally friendly - lower CO <sub>2</sub> emissions			
(92 plus) A			
(81-91) B			
(69-80) C			
(55-68) D			
(39-54) E			
(21-38) F			
(1-20) G			
Not environmentally friendly - higher CO <sub>2</sub> emissions			
			62
	41		
England & Wales		England & Wales	
EU Directive 2002/91/EC		EU Directive 2002/91/EC	

5C HIGH STREET, CATERHAM, SURREY, CR3 5UE

T: 01737 400 096 | E: HELLO@MONOCHROMEHOMES.CO.UK | MONOCHROMEHOMES.CO.UK

